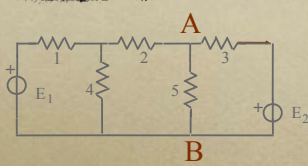


Esercitazione 5

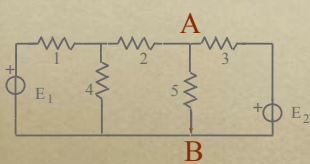
Teorema del generatore equ. di f.e.m: in Lab



$$I_5 = 1,06 \text{ A.}$$

$$\begin{aligned} R_1 &= 4,5 \ \Omega; \\ R_2 &= 10 \ \Omega; \\ R_3 &= 15 \ \Omega; \\ R_4 &= 35 \ \Omega; \\ R_5 &= 200 \ \Omega; \\ E_1 &= 290 \text{ V}; \\ E_2 &= 180 \text{ V.} \end{aligned}$$

Teorema del generatore equ. di f.e.m: in Lab

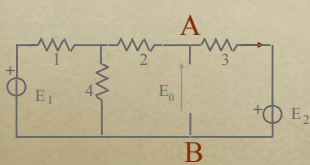


$$I_5 = 1,06 \text{ A.}$$

$$\begin{aligned} R_1 &= 4,5 \ \Omega; \\ R_2 &= 10 \ \Omega; \\ R_3 &= 15 \ \Omega; \\ R_4 &= 35 \ \Omega; \\ R_5 &= 200 \ \Omega; \\ E_1 &= 290 \text{ V}; \\ E_2 &= 180 \text{ V.} \end{aligned}$$

Es.19.2

Teorema del generatore equ. di f.e.m: in Lab

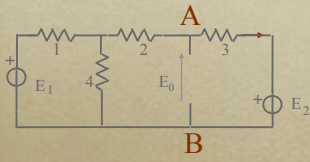


$$I_5 = 1,06 \text{ A.}$$

$$\begin{aligned} R_1 &= 4,5 \ \Omega; \\ R_2 &= 10 \ \Omega; \\ R_3 &= 15 \ \Omega; \\ R_4 &= 35 \ \Omega; \\ R_5 &= 200 \ \Omega; \\ E_1 &= 290 \text{ V}; \\ E_2 &= 180 \text{ V.} \end{aligned}$$

Es.19.3

Teorema del generatore equ. di f.e.m:
in Lab



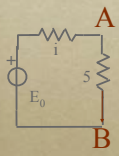
$E_0 = 219,83 \text{ V};$
 $R_1 = 7,24 \Omega .$

$R_1 = 4,5 \Omega;$
 $R_2 = 10 \Omega;$
 $R_3 = 15 \Omega;$
 $R_4 = 35 \Omega;$
 $R_5 = 200 \Omega;$
 $E_1 = 290 \text{ V};$
 $E_2 = 180 \text{ V}.$

$I_5 = 1,06 \text{ A}.$

Es.19.3

Teorema del generatore equ. di f.e.m:
in Lab



$E_0 = 219,83 \text{ V};$
 $R_1 = 7,24 \Omega .$

$R_1 = 4,5 \Omega;$
 $R_2 = 10 \Omega;$
 $R_3 = 15 \Omega;$
 $R_4 = 35 \Omega;$
 $R_5 = 200 \Omega;$
 $E_1 = 290 \text{ V};$
 $E_2 = 180 \text{ V}.$

$I_5 = 1,06 \text{ A}.$